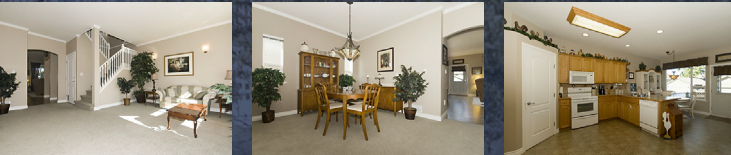




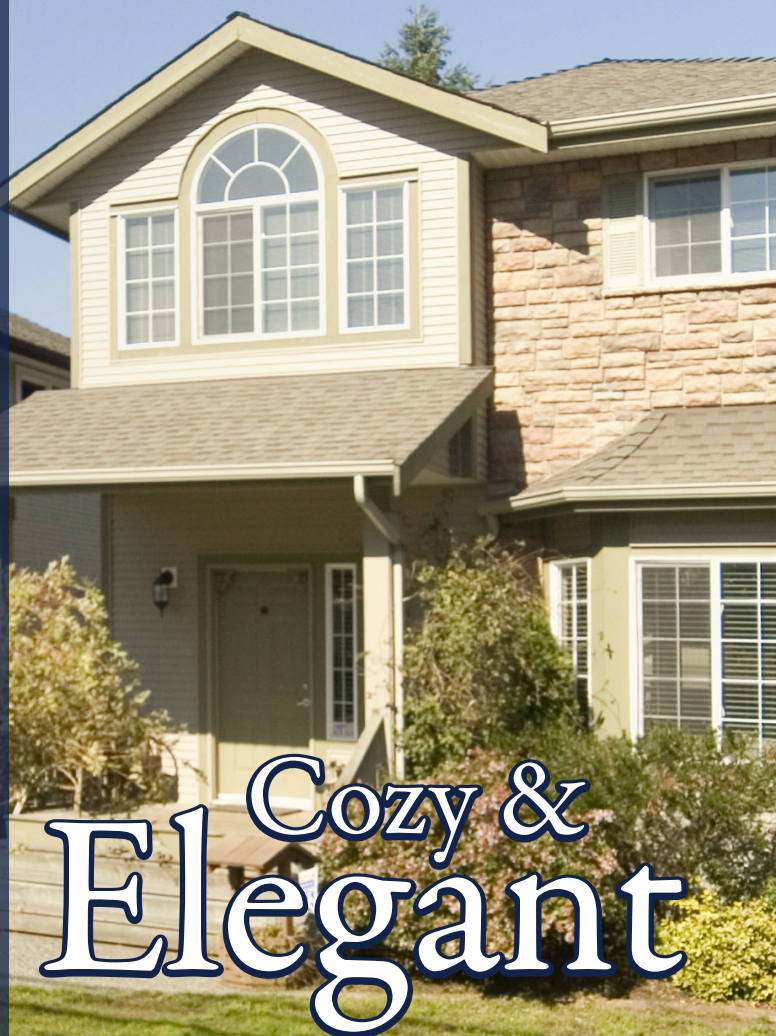
19325 Hammond Road | Pitt Meadows | British Columbia



If it's show quality you want-look no further. This gorgeous 2 storey home with 4 spacious bedrooms and 2.5 baths is both cozy and elegant. An oak kitchen with large pantry, breakfast bar and a bright eating area leads to an open plan family room. Famm has gas fireplace and built in entertainment unit. Entertain family and friends in a spacious formal living room and dining room with bay window. A covered patio leads to a fenced and landscaped back yard perfect for your summer BBQ's A 5 ft crawl space is ideal for storage and an oversized garage is next to RV and extra parking.



Bedrooms: 4 | Bathrooms: 2.5 | Sqft: 1,952
Price: \$484,900



Victoria Ward

778.838.9273



Macdonald Realty Ltd. | 22718 Lougheed Highway | Maple Ridge | V2X 2V6